

# Visual Web Development

Martin Rowe, Terry Marris October 2007

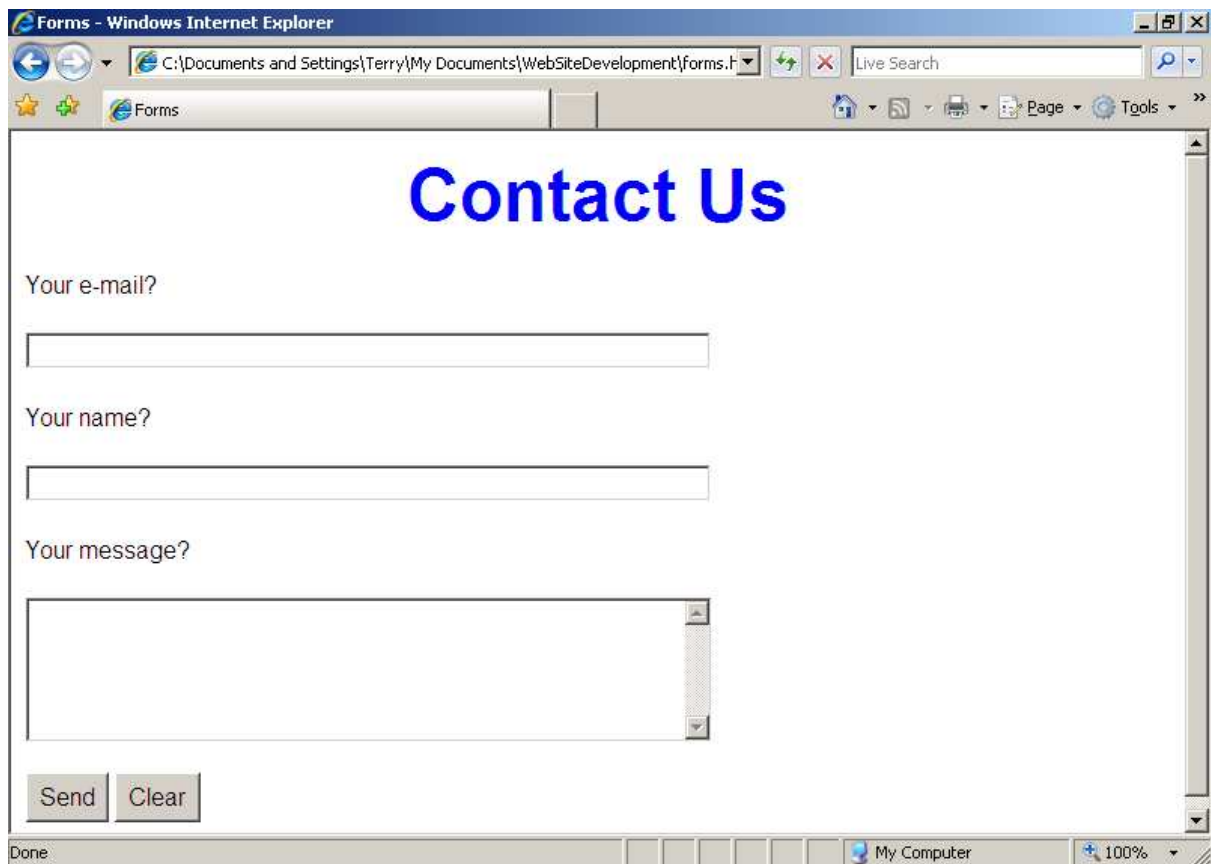
## 7 Contact

We see how users may e-mail us without exposing our e-mail address to spiders and robots that crawl through the web looking for addresses to add to spammer's lists.

We use your computer as a relay that hands e-mails on to a server.

### 7.1 Contact Form

The user is invited to provide their e-mail address, name and a comment. They then click either the send button to submit the form, or the clear button to clear the form.



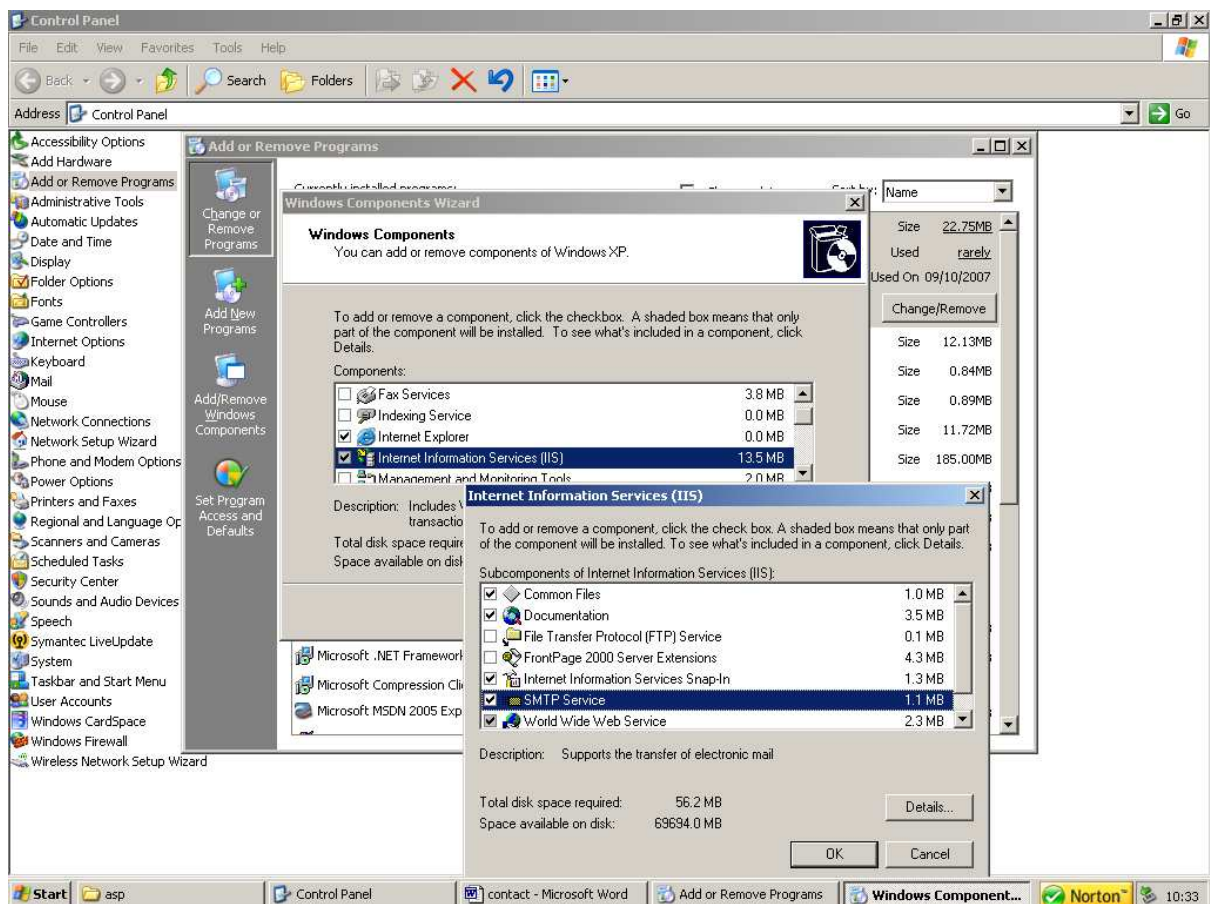
The image shows a screenshot of a Windows Internet Explorer browser window. The title bar reads "Forms - Windows Internet Explorer". The address bar shows the path "C:\Documents and Settings\Terry\My Documents\WebSiteDevelopment\forms.f". The page content features a large blue heading "Contact Us". Below the heading are three input fields: "Your e-mail?" (a single-line text box), "Your name?" (a single-line text box), and "Your message?" (a multi-line text area). At the bottom of the form are two buttons: "Send" and "Clear". The browser's status bar at the bottom shows "Done" and "My Computer" with a zoom level of "100%".

## 7.2 Installing the SMTP Service

To send e-mail from an ASP.NET application you must have the Simple Mail Transfer Protocol (SMTP) service of the Internet Information Services (IIS) installed **and** configured. This may already be done at college. But at home installing ASP.NET directly from Microsoft does not automatically install SMTP.

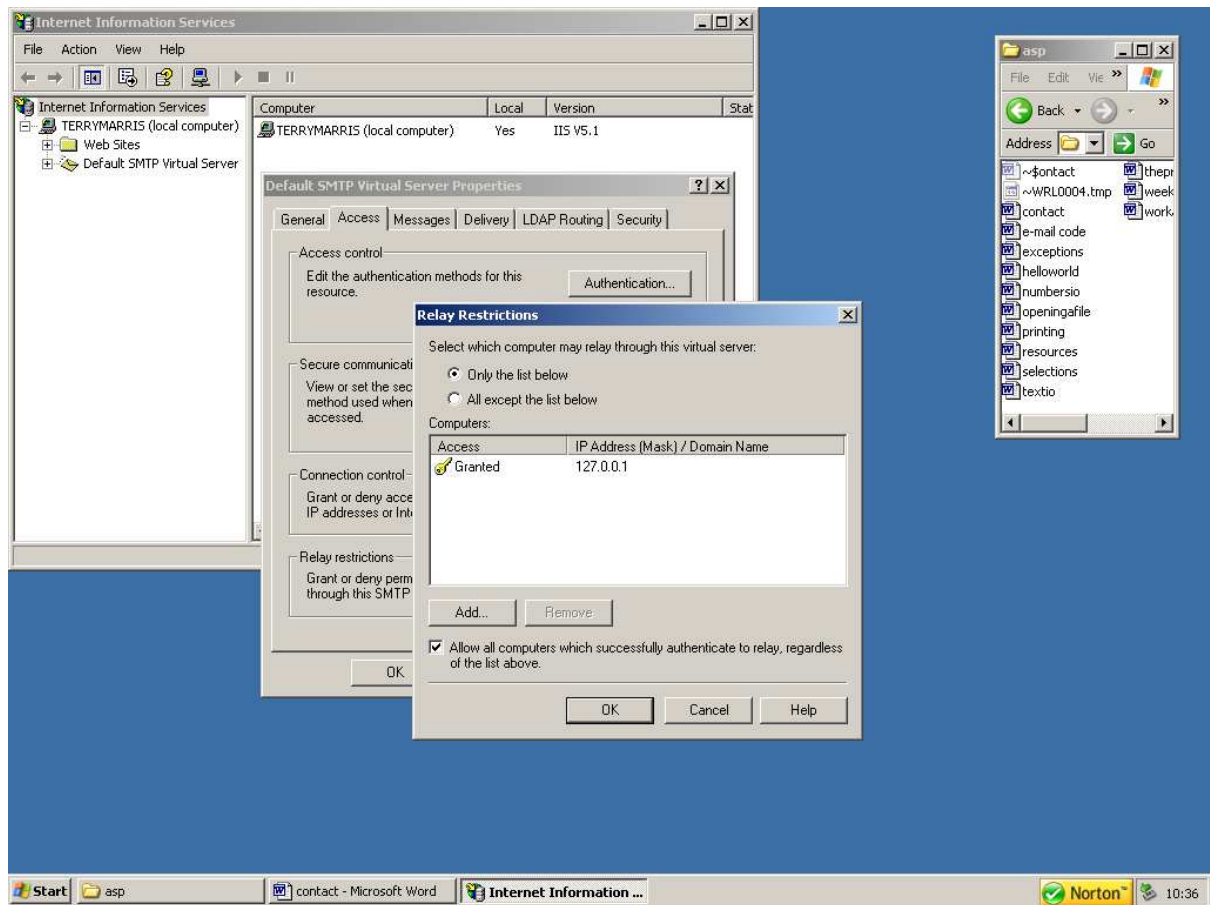
The details shown below may differ slightly depending on whether you are using Windows XP with the Classic Windows layout scheme. You will need Administrator rights.

### Installing SMTP Service



1. Start, Settings, Control Panel, Add or Remove Programs, Add/Remove Windows Components
2. Internet Information Services (IIS), Details, SMTP Service, OK
3. Next. Insert Windows XP disk if requested and follow instructions
4. Finish

## Configuring SMTP Service



1. Start, Run, inetmgr, OK
2. Expand local computer
3. Right-click Default STMP Virtual Server, Properties
4. Access, Relay
5. Select Only the list below
6. Add, Single Computer
7. IP address: 127.0.0.1
8. OK

## 7.2 The Code Behind the Send Button

The code shown below sends an e-mail from your web page.

```
Protected Sub btnSend_Click(ByVal sender As Object, ByVal e As
                               System.EventArgs) Handles btnSend.Click
    Dim strFrom As String = txtEmail.Text
    Dim strName As String = txtName.Text
    Dim strMessage As String = txtMessage.Text

    Dim strSubject As String = "Enquiry"
    Dim strTo As String = "tmarris@lec.ac.uk"

    Dim strHost As String = "localhost"
    Dim intPort As Integer = 25

    Dim server As New System.Net.Mail.SmtpClient(strHost, intPort)
    Dim email As New System.Net.Mail.MailMessage(strFrom, strTo, strSubject,
                                                strMessage)

    server.Send(email)
End Sub
```

Details from the client

Replace my e-mail with your e-mail address

Your computer forwards the e-mail

We:

- collect the input from the user
- specify the e-mail subject and delivery address
- specify that it is our own computer that relays the e-mail
- create a SmtpClient object from the given relay computer details
- create a MailMessage object
- send a Send(email) message to the server object:

server . Send ( email )  
↑            ↑  
the        the  
receiver   message

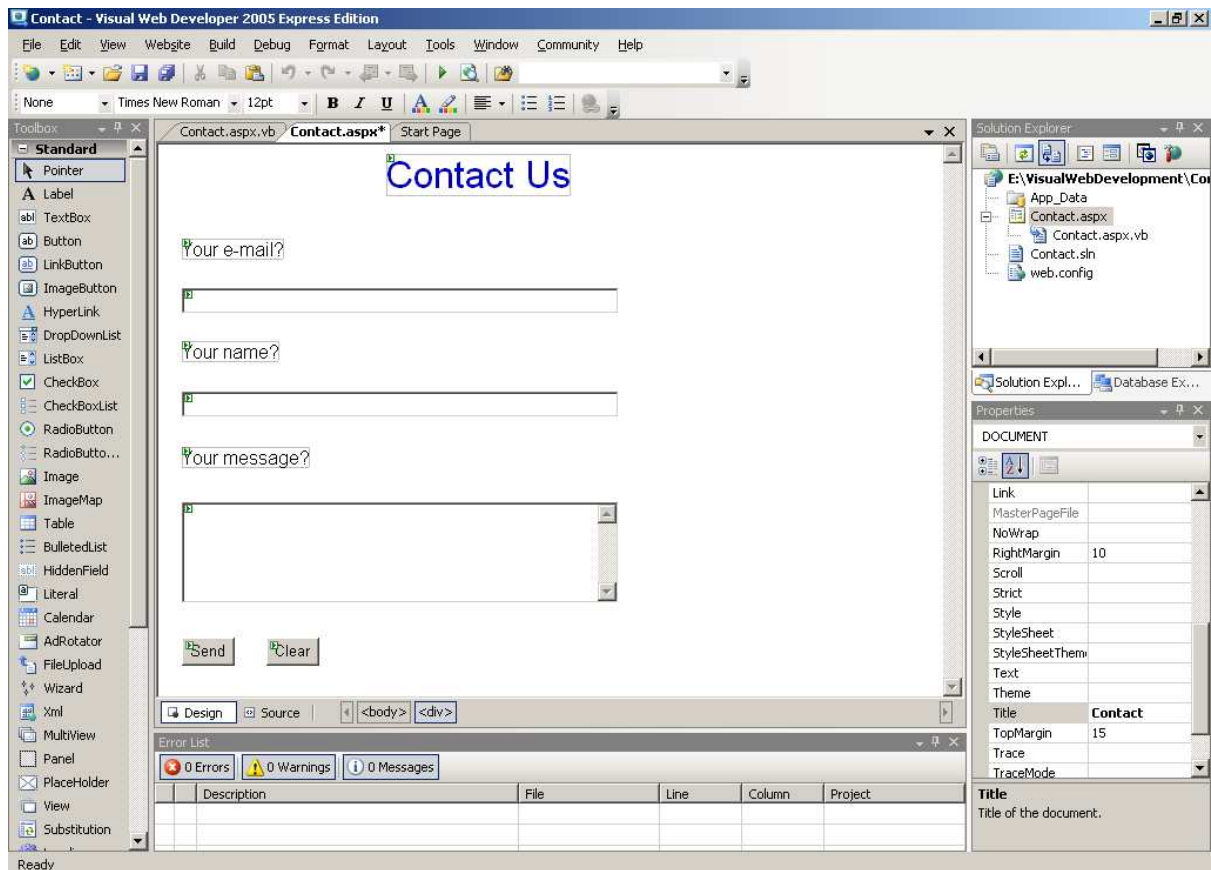
The object receiving the message looks down its list of methods: if it finds one that corresponds with the message, it performs its task. If the receiver does not find a corresponding method, it complains.

## 7.3 Use Case

<b>Use Case</b>	Contact
<b>Goal</b>	to send the contents of a form completed by the user as an e-mail to the owner of the web page
<b>Pre-condition</b>	
<b>Post-condition</b>	
<b>Initiating Actor</b>	the user
<b>Main Success Scenario</b>	
1	system displays prompts
2	user enters their e-mail address, name and message
3	system sends the message to the owner of the web page
4	exit success

The pre- and post- conditions, and exceptions, are left as an exercise for you to complete.

## 7.4 Layout, Properties and Values



<b>Control</b>	<b>Property</b>	<b>Value</b>
Form	File Name Title	Contact.aspx Contact
Document	Title	Contact
Label	ID Text Font Name Font Size ForeColor	lblTitle Contact Us Arial xx-Large blue
Label	ID Font Name Text	lblEmail Arial Your e-mail?
Text Box	ID Font Name	txtEmail Arial
Label	ID Font Name Text	lblName Arial Your name?
Text Box	ID Font Name	txtName Arial
Label	ID Font Name Text	lblMessage Arial Your message?
Text Box	ID Font Name Rows Text Mode	txtMessage Arial 5 Multiline
Button	ID Font Name Text	btnSend Arial Send
Button	ID Font Name Text	btnClear Arial Clear

Notice:

- the font is specified to be Arial throughout. Arial (or Verdana) is the font of choice because it is the easiest to read on a screen. What fonts do Google and Microsoft use for their screen displays?
- the text box ID = txtMessage is a multi-line text box allowing the user to enter more than one line of text as a single item.

## 7.5 Exercise

1. Implement the program, shown above, that sends an e-mail to you at your e-mail address
2. Investigate any exceptions that might occur and update the use case table shown above
3. Modify the program you wrote for Exercise 1 above so that control is maintained in the event of any possible errors.